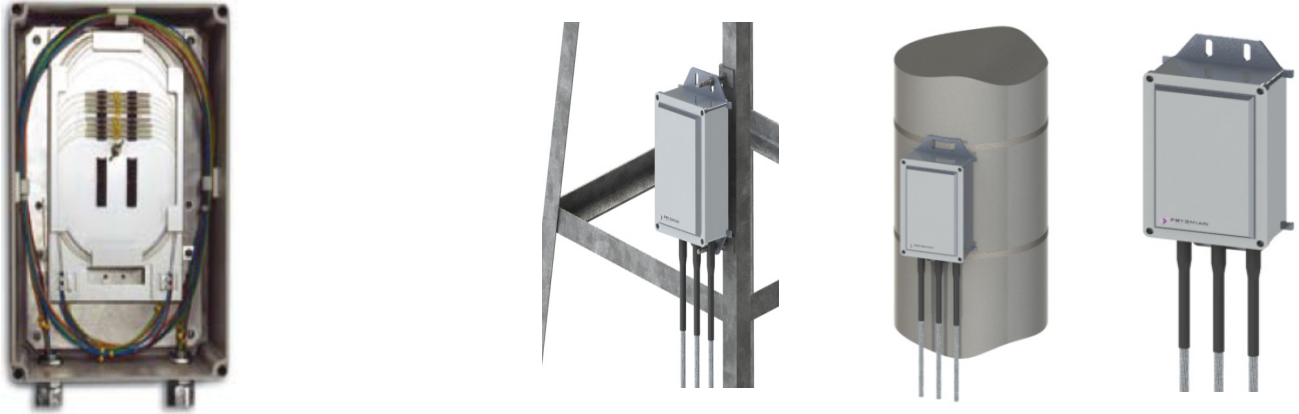


Optical Joint Box EWMJ

Prysmian Part Numbers: - See page 3



EWMJ joint boxes are specially designed to provide the maximum versatility for OPGW cable splicing, which enables their use in OPGW and other optical cable systems. The joint box is made of aluminium alloy and has a maximum capacity of 192 fibre splices. A pre-moulded neoprene anti-aging gasket, perfectly inserted in the groove of the cover, provides an excellent sealing against dust and water-jets.

An assembling plate prepared with fixing devices for the cable and for the splice trays is placed inside the box. Cable glands and a heavy wall heat shrinkable tube is used for sealing the entries of the OPGW cables. The anchoring of the joint box to the tower is realized with galvanized steel clamps allowing the fixation in all type of towers, and with stainless steel tape in all type of poles.

Features and Benefits

- Designed for the splicing of OPGW cables.
- The joint box can accommodate 8 splice trays with each splice able to accommodate up to 24 splices providing a maximum capacity of 192 fibre splices.
- The joint box can be supplied with either 2, 3 or 4 cable entries and can accommodate cables with a diameter of up to 25mm.
- The joint box can accommodate cables with plastic sheath, OPGW with aluminium tube (multi loose tube or single loose tube), OPGW with stainless steel tube or OPGW with stainless steel embedded aluminium tube.
- OPGW cables are sealed into the joint box using cable glands and a heavy walled heat shrink tube. Plastic sheathed cables are sealed using heavy walled heat shrink tube.
- The joint box can be anchored to the tower with galvanised steel clamps, allowing the fixation to any type of tower. It can be anchored to all types of poles using stainless steel tape.
- The external box is made of aluminium alloy and is sealed to IP67.
- The standard colour is RAL 7042.

Kit Contents

The Joint Box is supplied with a kit that contains all the material required to complete the joint such as splice trays, cable entries, splice protectors, tie-wraps, marking rings, clips and moisture absorber.

Additional Items

- None

Technical Data

- Maximum number of cable entries: 4
- Maximum Cable Diameter (mm): 25
- Maximum number of splice trays: 8
- Maximum number of splices per tray: 24
- Maximum number of splices: 192
- IP Rating: IP67
- Required space envelope (mm): (l) 319 x (w) 219 x (d) 110.
- Operating temperature: -40°C to + 85°C
- Material:-
 - Joint Box: Aluminium alloy with grey coated powder (RAL 7042)
 - Fastening Structure: Aluminium and galvanised steel
 - Nuts and Bolts: Stainless Steel

Logistics

- Packing Dimensions (mm): (l) 450 x (w) 90 x (d) 35
- Packed Weight (Kg): 7.0
- Net Weight (Kg): 6.5

Part Numbers

Type of EWMJ				
OPGW Cable Ø	No. of Entries	Configuration	Type	Part Number
10-25	2	OPGW-OPGW	A	For quotation and technical support please contact opgw@prysmiangroup.com
		OPGW-PLUG	B	
	3	OPGW-OPGW-PLUG TYPE AT	ATT	
		OPGW-DUCT-PLUG	BT	
		OPGW-OPGW-DUCT	C	
		OPGW-OPGW-OPGW	D	
		OPGW-DUCT-DUCT	I	
10-19	4	OPGW-OPGW-PLUG-PLUG	ATT	
		OPGW-DUCT-PLUG-PLUG	BTT	
		OPGW-OPGW-DUCT-DUCT	E	
		OPGW-OPGW-OPGW-DUCT	F	
		OPGW-OPGW-OPGW-OPGW	G	
		OPGW-DUCT-DUCT-DUCT	J	

Please contact your local sales office listed on www.prysmiangroup.com

© Prysmian Group 2012, All Rights Reserved.

The information contained within this document must not be copied, reprinted or reproduced in any form, either wholly or in part, without the written consent of Prysmian Group. The information is believed correct at the time of issue. Prysmian Group reserves the right to amend this specification without notice. This specification is not contractually valid unless specifically authorised by Prysmian Group.