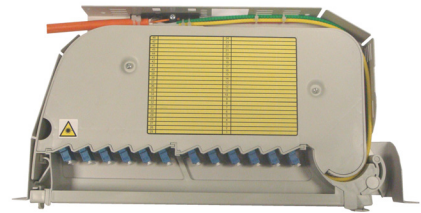
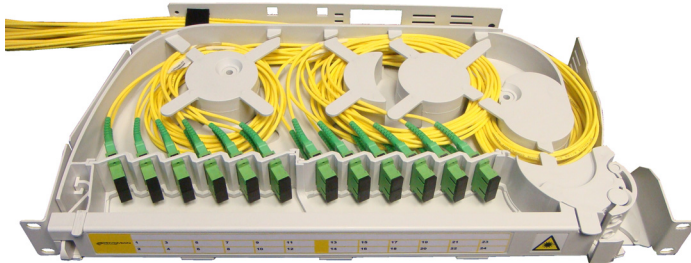


SRS3000 1U Patch Only Shelf

Prysmian Part Number: See table on following pages.



The SRS3000 Patch Only Shelf is a modular unit available in a variety of configurations for integration in to 19" and ETSI racks, street side or wall mounted cabinets. The product consists of a metal chassis, a plastic light weight patch module and a cable anchoring system. The units can be installed in to standard 19" racks, or ETSI and ANSI/TEP1E racks using conversion brackets. The product has a capacity of up to 48 adapters in a 1U unit for SC and LC type connectors, and up to 24 adapters for FC, ST and E2000 type connectors.

The shelf is fully compatible with all optical cable types and can also be used with blown fibre tube cables.

Features and Benefits

- Modular panel design enables easy capacity upgrades from 12 to 48 adapters.
- Very high patch density of 48 adapters for SC and LC connector types in 1U and High patch density of 24 adapters for ST, FC and E2000 connector types in 1U.
- Suitable for installation into 19"/ ETSI / ANSI racks, wall mounted cabinets and streetside cabinets.
- Patch module pivots outwards for easy fibre access and maintenance.
- The panel can be used for optical splitters and other passive devices in alternative configurations. Please contact Prysmian for further information.
- The drop down front panel prevents accidental disconnection of patch-cords and provides additional space for patchcord routing during installations.
- All fibres are positively bend managed to a 30mm radius
- Supplied with a large cover label and front panel labels for easy identification and data recording.
- Patch bay is covered with a detachable lid (secured with two screws) to protect the fibres once installed.
- Can accommodate most cable types including blown fibre tube cables.

Note: for 48f 1U shelves a 2mm Patch-cord size should be used.

Ordering information

The SRS3000 Patch Only shelf can be ordered as a fully configured unit with either 12, 24 or 48 adapters dependant on connector style. The unit can also be supplied empty, or as a part configured product allowing future capacity upgrades.

For kit contents and part numbers for the various configurations, please use the tables on the following pages.

Additional Items - Optional

- ETSI Conversion Brackets
- Rear Mounting Brackets
- ARS Cable Anchor (additional)
- Upgrade Kits
- Patch-cords (see datasheet AC004)

Technical Data

- Max number of terminations
 - 48 for SC or LC connectors
 - 24 for FC, ST and E2000 connectors
- Max number of output patchcords: 48 with 2mm diameter patch cords
- Max Cable Diameter: 14mm
- Required space envelope (mm): (w) 447 x (d) 245 x (h) 44.5
- Operating temperature: -20°C to + 60°C (5 to 93% RH)
- Material:-
 - Metalwork: Mild Steel
 - Plastics: High Impact Polystyrene
- Finish:-
 - Metalwork: Painted light grey RAL 7035
 - Plastics: Light Grey RAL 7035
- Testing:-
 - Optical: Tested at 1310nm,1550nm and 1625nm
 - Dry heat: BS EN 60068-2-2 Test Bb
 - Damp heat: IEC 60068-2-3: 1969
 - Change of temperature: IEC 60068-2-14: 1984
 - Vibration: IEC 60068-2-6: 1995
 - Shock: IEC 60068-2-27: 1987

Logistics

- Packing Dimensions (mm): (w) 560 x (d) 290 x (h) 175
- Packed Weight (kg): 2.95
- Net weight (kg): 2.40

Part Numbers

SRS3000 – Patch Only Shelves

The SRS3000 Patch Only Shelf is supplied with a cable anchor kit (ARS type), cable tie wraps, a patchcord bend manager and a rack fixing kit. Adapters are also supplied installed by Prysmian where required. Please refer to the part number tables below and on the following page.

Part number	Connector type	Supplied with	Upgradeable	Upgrade Part Number
SRS1-100	None	Two blanking plates to be upgraded later	Yes to 48	Various. See page 5

Part number	Connector type	Fibre type	Adaptor type	No of Fibres	Upgradeable	Upgrade Part Number
SRS1-101	FC/UPC	S/mode	Simplex	12	Yes to 24	XSRSC00141
SRS1-102	FC/UPC	S/mode	Simplex	24	No	N/A
SRS1-103	FC/APC	S/mode	Simplex	12	Yes to 24	XSRSC00142
SRS1-104	FC/APC	S/mode	Simplex	24	No	N/A
SRS1-105	FC	Multimode	Simplex	12	Yes to 24	XSRSC00141
SRS1-106	FC	Multimode	Simplex	24	No	N/A

Part number	Connector type	Fibre type	Adaptor type	No of Fibres	Upgradeable	Upgrade Part Number
SRS1-107	SC/UPC	S/mode	Simplex	12	Yes to 24	XSRSC00144
SRS1-108	SC/UPC	S/mode	Simplex	24	No	N/A
SRS1-109	SC/UPC	S/mode	Duplex	12	Yes to 24	XSRSC00145
SRS1-110	SC/UPC	S/mode	Duplex	24	No	N/A
SRS1-111	SC/UPC	S/mode	Quad *	24	Yes to 48	XSRSC00146
SRS1-112	SC/UPC	S/mode	Quad *	48	No	N/A
SRS1-113	SC/APC	S/mode	Simplex	12	Yes to 24	XSRSC00147
SRS1-114	SC/APC	S/mode	Simplex	24	No	N/A
SRS1-115	SC/APC	S/mode	Duplex	12	Yes to 24	XSRSC00148
SRS1-116	SC/APC	S/mode	Duplex	24	No	N/A
SRS1-117	SC/APC	S/mode	Quad *	24	Yes to 48	XSRSC00149
SRS1-118	SC/APC	S/mode	Quad *	48	No	N/A
SRS1-119	SC	Multimode	Simplex	12	Yes to 24	XSRSC00150
SRS1-120	SC	Multimode	Simplex	24	No	N/A
SRS1-121	SC	Multimode	Duplex	12	Yes to 24	XSRSC00151
SRS1-122	SC	Multimode	Duplex	24	No	N/A
SRS1-123	SC	Multimode	Quad *	24	Yes to 48	XSRSC00152
SRS1-124	SC	Multimode	Quad *	48	No	N/A

* Note For SC connectors where Quad is described, this is actually two duplex adapters next to each other.

SRS3000 Patch Only Shelves continued

Part number	Connector type	Fibre type	Adaptor type	No of Fibres	Upgradeable	Upgrade Part Number
SRS1-125	LC/UPC	S/mode	Duplex	24	Yes to 48	XSRSC00153
SRS1-126	LC/UPC	S/mode	Duplex	48	No	N/A
SRS1-127	LC/UPC	S/mode	Quad	24	Yes to 48	XSRSC00154
SRS1-128	LC/UPC	S/mode	Quad	48	No	N/A
SRS1-129	LC/APC	S/mode	Duplex	24	Yes to 48	XSRSC00155
SRS1-130	LC/APC	S/mode	Duplex	48	No	N/A
SRS1-131	LC/APC	S/mode	Quad	24	Yes to 48	XSRSC00156
SRS1-132	LC/APC	S/mode	Quad	48	No	N/A
SRS1-133	LC	Multimode	Duplex	24	Yes to 48	XSRSC00157
SRS1-134	LC	Multimode	Duplex	48	No	N/A
SRS1-135	LC	Multimode	Quad	24	Yes to 48	XSRSC00158
SRS1-136	LC	Multimode	Quad	48	No	N/A

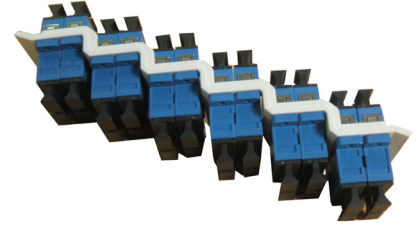
Part number	Connector type	Fibre type	Adaptor type	No of Fibres	Upgradeable	Upgrade Part Number
SRS1-137	E2000/UPC	S/mode	Simplex	12	Yes to 24	XSRSC00159
SRS1-138	E2000/UPC	S/mode	Simplex	24	No	N/A
SRS1-139	E2000/APC	S/mode	Simplex	12	Yes to 24	XSRSC00160
SRS1-140	E2000/APC	S/mode	Simplex	24	No	N/A
SRS1-141	E2000	Multimode	Simplex	12	Yes to 24	XSRSC00161
SRS1-142	E2000	Multimode	Simplex	24	No	N/A

Part number	Connector type	Fibre type	Adaptor type	No of Fibres	Upgradeable	Upgrade Part Number
SRS1-143	ST/UPC	S/mode & M/mode	Simplex	12	Yes to 24	XSRSC00162
SRS1-144	ST/UPC	S/mode & M/Mode	Simplex	24	No	N/A

Additional Items

Upgrade kits

The Upgrade kit is used to increase the capacity of modules that have been supplied empty or partially populated. The kit enables additional adapters to be installed within the SRS300 Shelf. The kit comprises of an adaptor plate and adaptors.



Connector type	Fibre type	Adaptor type	Fibres	Part number
FC/UPC	S/mode & M/mode	Simplex	12	XSRSC00141
FC/APC	S/mode	Simplex	12	XSRSC00142
SC/UPC	S/mode	Simplex	12	XSRSC00144
SC/UPC	S/mode	Duplex	12	XSRSC00145
SC/UPC	S/mode	Quad *	24	XSRSC00146
SC/APC	S/mode	Simplex	12	XSRSC00147
SC/APC	S/mode	Duplex	12	XSRSC00148
SC/APC	S/mode	Quad *	24	XSRSC00149
SC	M/mode	Simplex	12	XSRSC00150
SC	M/mode	Duplex	12	XSRSC00151
SC	M/mode	Quad *	24	XSRSC00152
LC/UPC	S/mode	Duplex	24	XSRSC00153
LC/UPC	S/mode	Quad	24	XSRSC00154
LC/APC	S/mode	Duplex	24	XSRSC00155
LC/APC	S/mode	Quad	24	XSRSC00156
LC	M/mode	Duplex	24	XSRSC00157
LC	M/mode	Quad	24	XSRSC00158
E2000UPC	S/mode	Simplex	12	XSRSC00159
E2000APC	S/mode	Simplex	12	XSRSC00160
E2000	M/mode	Simplex	12	XSRSC00161
ST/UPC	S/mode & M/mode	Simplex	12	XSRSC00162

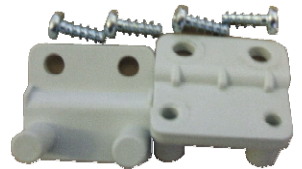
* Note For SC connectors where Quad is described, this is actually two duplex adapters next to each other.

Additional Items continued

ETSI Conversion Brackets.

ETSI conversion brackets enable the SRS3000 shelf to be installed into an ETSI rack. They are secured to the unit using four fixing screws.

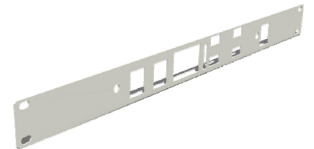
Prysmian Part No. – XKTSC00171 Grey



Rear Mounting Bracket

The Rear Mounting Bracket is used to install an SRS3000 shelf into a rear mounted rack. The bracket simply bolts to the back of the SRS shelf and provides fixing holes for securing to a rear mounted 19" rack. .

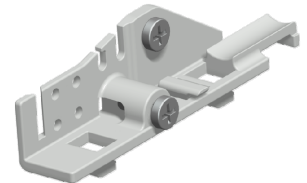
Prysmian Part No. – XSRSC00361



SRS - ARS Cable Anchor Kit

The ARS Cable Anchor kit is used to install an additional cable into an SRS3000 shelf. The kit enables a single cable to be anchored and for the fibres to be distributed onto the shelf. The ARS is suitable for cables between 12 and 48 fibres. Bend limiting routing tubes to protect the fibres being routed to the shelf are also supplied in the kit. The ARS also allows for the anchoring / termination of both the cable strength member and any Aramid within the cable construction.

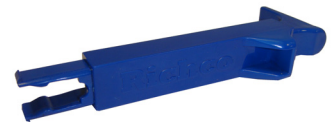
Prysmian Part No. – XSRSC00360



Connector Removal Tool

The connector removal tool is used to aid removal of SC connectors in applications where a 48 fibre shelf is used. In this application the connectors are close together and can be difficult to remove by hand. The removal tool allows the installer to remove the connector with ease.

Prysmian Part No. – XKTSC00286



Please contact your local sales office listed on www.prysmiangroup.com

© Prysmian Group 2012, All Rights Reserved.
The information contained within this document must not be copied, reprinted or reproduced in any form, either wholly or in part, without the written consent of Prysmian Group. The information is believed correct at the time of issue. Prysmian Group reserves the right to amend this specification without notice. This specification is not contractually valid unless specifically authorised by Prysmian Group.