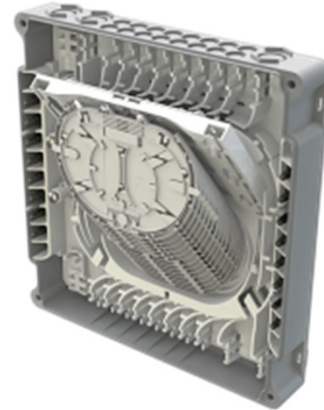


Medium Distribution Wall Box (MDWB)

Prysmian Part Numbers: - See page 3



The Medium Distribution Wall Box is a wall mounted splice box used for the distribution of fibres to customer drop cables. The unit has a capacity of up to 168 fibre splices and can accommodate input cables of both butt and in-line types. Up to thirty two customer drop cables of 3-6mm in diameter, and four customer drop cables of 6-12mm in diameter, can be distributed from the box. Drop cable ports are provided on both top and bottom faces of the box and top and bottom manifolds provide easy routing of fibres within the unit.

The box can be supplied with either single element splice trays or single circuit splice trays. The box can be supplied in white or dark grey and both units have an IP55 rating making it suitable for internal or external use.

Features and Benefits

- For internal and external use.
- Can be supplied with single element or single circuit trays. Single element splice capacity is 168 fibres. Single Circuit splice capacity is 112 fibres. Single circuit splice trays are a single tray with two separate storage areas.
- **Note:** For use with 1.5mm splice protectors. Crimp splices can also be used in the single element trays but the capacity is reduced to 6 fibres per tray.
- Each box comes supplied with a top and bottom routing manifold for fibre routing to the splice trays.
- All fibres are positively managed to maintain a 30mm minimum bend radius within the wall box.
- Splice trays hinge upwards individually, allowing full access to spliced fibres without disturbance to live fibres in adjacent trays.
- The box is suitable for Riser applications.
- Cables can enter / exit from the top or bottom face of the box.
- The box is sealed to IP55 and the boxes are moulded from UV stable material to prevent discolouring.
- The boxes are made using flame retardant UL94-V0 rated materials.

Kit Contents

The MDWB is supplied with

- 01 x Base
- 01 x Cover with Seal
- 04 x Cover Fixing Screws (Captive)
- 14 x Splice Trays SE or SC
- 02 x Fibre Routing Manifolds
- 03 x Cable Entry Gland
- 03 x Cable Tie - Entry Cable
- 12 x Drop Cable Grommet
- 12 x Cable Tie - Drop Cable
- 01 x Wall Fixing Kit
- 02 x In Line Cable Cover
- 01 x Installation Guide

Additional Items

- Drop Cable Kit 3-6mm (spares)
- Drop Cable Kit - 6-12mm (spares)
- Splice protectors

Technical Data

- Number of Input cable ports: 1 (can also be used for in-line pass through). **Note** output ports can also be used as additional input ports.
- Number of Output cable ports: 32 for 3-6mm cables (16 on top and 16 on bottom face of box)
4 for 6-12mm cables (2 on top and 2 on bottom face of box).
- Maximum Input cable diameter (mm): 12 (M20 Cable gland)
- Maximum Output cable diameter (mm): 3-6 (32 ports), 6-12 (4 ports)
- Maximum number of splice trays: 14 Single Element Trays = 168 fibres
28 Single Circuit = 112 fibres on 4f per trays basis (note = 14 double SC trays where each tray has two storage areas)
- Required space envelope (mm): (w) 250 x (h) 280 x (d) 100.
- Operating temperature: -20°C to + 50°C (5 to 95% RH)
- Material:-
 - Box (Dark Grey): FR ABS Dark Grey (RAL7030)
 - Box (White): FR ABS White (RAL9016)
 - Splice trays: FR ABS White (RAL9016)
- Testing:-
 - Closure sealing: IP55 – External product only
 - Optical: Tested 1310nm,1550nm and 1625nm
 - Dry heat: BS EN 60068-2-2 Test Bb
 - Damp heat: IEC 60068-2-3: 1969
 - Change of temperature: IEC 60068-2-14: 1984
 - Vibration: IEC 60068-2-6: 1995
 - Shock: IEC 60068-2-27: 1987

Logistics

- Packing Dimensions (mm): (w) 350 x (h) 450 x (d) 150
- Packed Weight (Kg): 2.2
- Net Weight (Kg): 2.1
- Installation Instructions Included

Part Numbers

Box Colour	Tray Type	Max Capacity	Part Number
White	Single Element	168f	XCPSC01921
White	Single Circuit	112f	XCPSC02023
Dark Grey	Single Element	168f	XCPSC01922
Dark Grey	Single Circuit	112f	XCPSC02024

Additional Items

Drop Cable kit (3-6mm) – 6 Port

This kit consists of six cable ties and six rubber grommets and is used to install additional drop cables into six of the 24 drop ports (for cables of 3-6mm in diameter) on the bottom or top face of the box.



Prysmian Part No. – XKTSC00384 (External Box – Black grommets)
XKTSC01110 (Internal Box – White grommets)

Drop Cable Kit (6-12mm) – 2 Port

This kit consists of two cable glands and cable ties and is used to install additional drop cables into two of the four ports (for cables of 6-12mm in diameter) on the bottom or top face of the box.



Prysmian Part No. – XKTSC00385 (External Box – Black gland)
XKTSC01111 (Internal Box – White Gland)

Heat Shrink Splice Protectors

Splice protectors are used to protect the fibre splice. They are 1.5mm in diameter and 30mm in length.



Prysmian Part No. - XPESC00057 (pack of 50)

Please contact your local sales office listed on www.prysmiangroup.com

© Prysmian Group 2012, All Rights Reserved.

The information contained within this document must not be copied, reprinted or reproduced in any form, either wholly or in part, without the written consent of Prysmian Group. The information is believed correct at the time of issue. Prysmian Group reserves the right to amend this specification without notice. This specification is not contractually valid unless specifically authorised by Prysmian Group.